

# Occ3-PMF

Device for print models to use the Occluform-3 with Erkoform-3 units

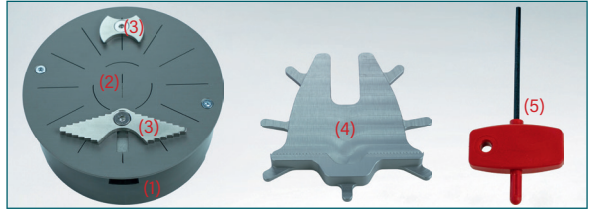


Video  
Occ3-PMF  
Instruction

Occ3-PMF, 188 575:

Model pot insert (1) with model disc (2) and clamping jaws (3), counterbite holder (4), and fixing key (5) for the clamping device.

The model insert (1) reduces the amount of air to be evacuated for faster and better molding.

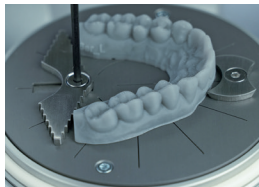


## Quick guide

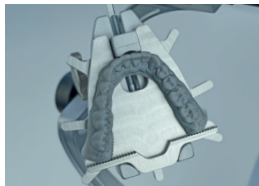
1. Take the Occluform-3 model pot out of the Erkoform-3 form pot. Remove possible impurities from the form pot.



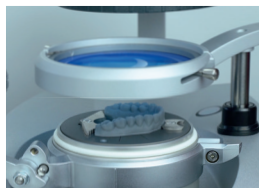
3. Clamp the upper jaw model and fix the clamping jaws. The model must rest flush on the model disc.



5. Place the counterbite model on the counterbite holder and fix with the Occluform-3 hex wrench.



7. ... thermoform and ...



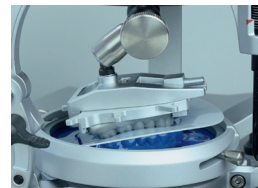
2. For it insert and engage the Occ3-PMF model pot insert. In doing so the wide clamping jaw points to the marking at the unit form pot.



4. Insert the Occ3-PMF counterbite holder in the Occluform-3 model plate.



6. Now articulate the models according to the Occluform-3 instructions (with construction bite, if available) and continue ...

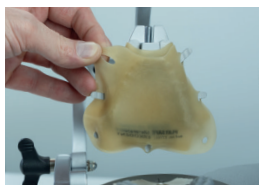


8. ... adjust the opposing bite.

Finish the occlusal splint, see downloads [www.erkodent.com](http://www.erkodent.com).

Occ3-PMF also enables the production of **Playsafe triple sports mouthguards** with printed models (thermoplastic filament models are not suitable).

For this clamp 2 Playsafe bite spacer over the counterbite model.



And continue according to the Playsafe triple instructions.

Playsafe triple  
Fabrication



CE 0197

Erkodent Erich Kopp GmbH  
Siemensstraße 3  
72285 Pfalzgrafenweiler  
Germany

**ERKODENT®**



Tel.: + 49 (0) 74 45/85 01-0  
[info@erkodent.com](mailto:info@erkodent.com)  
[www.erkodent.com](http://www.erkodent.com)  
EN ISO 13485 / ISO 9001

Occ3-PMF-anl-DE-EN-10-07-2025